

Barcelona Graduate School of Economics

Summer School 2019



July 1 - 19, 2019



Courses in:

Banking

Digital Economy

Macroeconomics **CREi** 

Data Science

Development Economics

Finance

Labor Economics

Macroeconometrics

Microeconometrics

www.barcelonagse.eu/study/summer-school

BANKING

BANKING THEORY, Frederic Malherbe (University College London)
EMPIRICAL TOOLS/APPLICATIONS IN BANKING AND MACRO-FINANCE, José-Luis Peydró (ICREA-UPF and Barcelona GSE)
BANK REGULATION, Thorstein Beck (Cass Business School)
EMPIRICAL BANKING- METHODOLOGICAL ASPECTS, Stephen Ongena (University of Zurich and Swiss Finance Institute)

DIGITAL ECONOMY

ECONOMICS OF CRYPTO-CURRENCIES AND BLOCKCHAIN, Guillaume Haeringer (Baruch College)
ADVANCED TOPICS IN DIGITAL ECONOMY, Juan-José Ganuza (UPF and Barcelona GSE), and Rosa Ferrer (UPF and Barcelona GSE)

MACROECONOMICS

AN INTRODUCTION TO THE NEW KEYNESIAN FRAMEWORK AND ITS MONETARY POLICY APPLICATIONS, Jordi Galí (CREI, UPF and Barcelona GSE)
NUMERICAL METHODS FOR FISCAL AND MONETARY POLICY ANALYSIS, Davide Debortoli (CREI, UPF and Barcelona GSE)
NUMERICAL METHODS: COMPUTER LAB (Companion Course)
SPATIAL EQUILIBRIUM AND THE ECONOMICS OF CITIES, Giacomo Ponzetto (CREI, UPF and Barcelona GSE)
INNOVATION AND GROWTH IN THE GLOBAL ECONOMY, Gino Gancia (CREI, Barcelona GSE and CEPR)
FINANCE, FIRM DYNAMICS AND AGGREGATE OUTCOMES, Andrea Caggese (CREI, UPF, and BGSE)
MACRO-PRUDENTIAL POLICY IN THEORY AND PRACTICE, Alberto Martín (CREI, UPF, Barcelona GSE and CEPR)
SOVEREIGN DEBT CRISES: THEORY, EVIDENCE AND POLICY, Fernando Broner (CREI, UPF, Barcelona GSE and CEPR)

DATA SCIENCE

FOUNDATIONS OF DATA SCIENCE, Ioannis Arapakis (Telefónica Research), Omiros Papaspiliopoulos (ICREA-UPF and Barcelona GSE), Nandan Rao (GPEFM)
MACHINE LEARNING IN SOCIAL SCIENCES, Stephen Hansen (University of Oxford), Omiros Papaspiliopoulos (ICREA-UPF and Barcelona GSE), David Rossell (UPF and Barcelona GSE)
DEEP LEARNING AND APPLICATIONS, Alexandros Karatzoglou and Ilias Leontiadis from Telefónica Research

DEVELOPMENT ECONOMICS

RANDOMIZED CONTROL TRIALS (RCTs) IN DEVELOPMENT ECONOMICS: DESIGN AND DATA ANALYSIS, Pamela Jakiela (Center for Global Development and University of Maryland) and Owen Ozier (World Bank)

FINANCE

EMPIRICAL CORPORATE FINANCE, Stefano Rossi (Bocconi University)
CORPORATE FINANCE, Filippo Ippolito (UPF and Barcelona GSE)
INVESTMENTS, Javier Gil-Bazo (UPF and Barcelona GSE)
INVESTING IN FIXED INCOME, Mary Pieterse-Bloem (Erasmus School of Economics)
ADVANCED PORTFOLIO MANAGEMENT, Francesco Sangiorgi (Frankfurt School of Finance & Management)
PRICING FINANCIAL DERIVATIVES, Eulàlia Nualart (UPF and Barcelona GSE)
RISE OF THE MACHINES: ELECTRONIC MARKETS AND HIGH-FREQUENCY TRADING, Roberto Pascual (University of the Balearic Islands)

LABOR ECONOMICS

ECONOMICS OF EDUCATION, Derek Neal (University of Chicago)
ECONOMICS OF MIGRATION, Joan Llull (MOVE, UAB and Barcelona GSE)
GENDER ECONOMICS, Libertad González (UPF and Barcelona GSE)

MACROECONOMETRICS

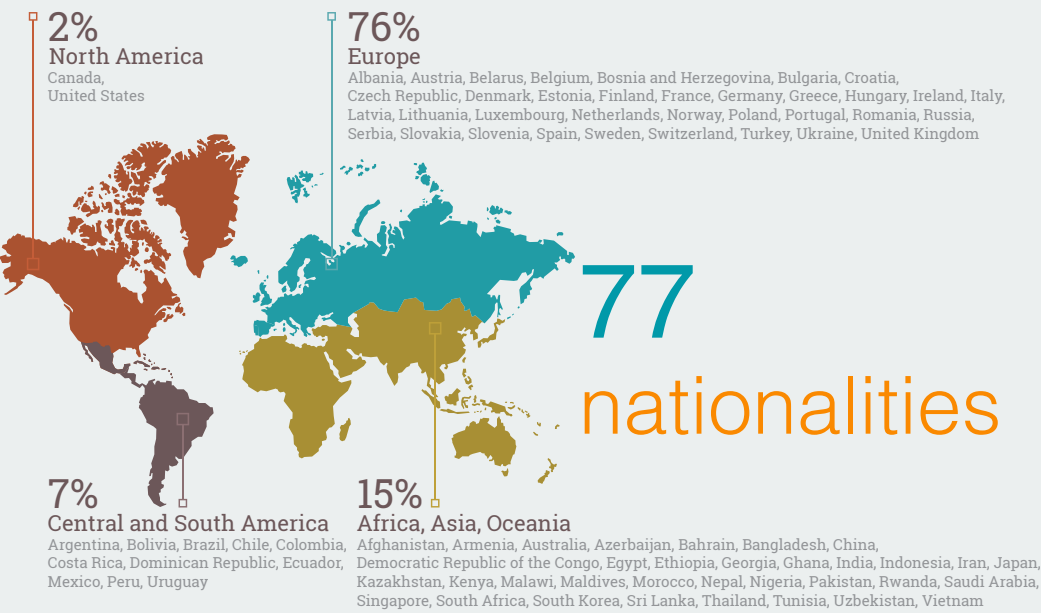
BAYESIAN TIME SERIES METHODS: INTRODUCTORY, Gary Koop (University of Strathclyde)
BAYESIAN METHODS FOR DSGE MODELS, Kristoffer Nimark (Cornell University)
MODELING NON-STATIONARY AND NON-LINEAR TIME SERIES, Laura Mayoral (IAE-CSIC and Barcelona GSE) and Gabriel Pérez-Quirós (Bank of Spain)
BAYESIAN TIME SERIES METHODS: ADVANCED, Dimitris Korobilis (University of Essex)
TIME SERIES METHODS FOR MACROECONOMIC ANALYSIS: PART 1, Luca Gambetti (UAB and Barcelona GSE) - on leave
TIME SERIES METHODS FOR FINANCIAL TIME SERIES, Christian Brownlees (UPF and Barcelona GSE)
TIME SERIES METHODS FOR MACROECONOMIC ANALYSIS: PART 2, Luca Gambetti (UAB and Barcelona GSE) and Luca Sala (Bocconi University)

MICROECONOMETRICS

PANEL DATA LINEAR ANALYSIS, Badi Baltagi (Syracuse University)
THE IMPACTS OF POLICIES ON HEALTH OUTCOMES, Judit Vall (University of Barcelona)
ECONOMETRICS OF CROSS-SECTION DATA WITH APPLICATIONS, Jaume Garcia-Villar (UPF and Barcelona GSE)
QUANTITATIVE METHODS FOR PUBLIC POLICY EVALUATION, Stephan Litschig (National Graduate Institute for Policy Studies, Japan)
DYNAMIC STRUCTURAL MODELS FOR POLICY EVALUATION, Joan Llull (MOVE, UAB and Barcelona GSE)
DYNAMIC AND NON-LINEAR PANEL DATA MODELS, Sergi Jiménez-Martín (UPF and Barcelona GSE)

Join an international community

+600 participants



Average age: 31 years 36% female 64% male

Participants' years of experience



Participants' sectors



(*) All data is based on the Class of 2018



July 1 - 19, 2019



Courses in:

Banking	Digital Economy	Macroeconomics 
Data Science	Development Economics	Finance
Labor Economics	Macroeconometrics	Microeconometrics

Save the date: Summer School 2020, June 29 - July 17

www.barcelonagse.eu/study/summer-school